



**India Meteorological Department
(Ministry of Earth Sciences)**

BULLETIN NO. 4 (BoB/02/2023)

TIME OF ISSUE: 1300 HOURS IST **DATED: 10.05.2023**
FROM: INDIA METEOROLOGICAL DEPARTMENT (FAX NO. 24643965/24699216/24623220)

TO: CONTROL ROOM, NDM, MINISTRY OF HOME AFFAIRS (FAX.NO. 23093750)
CONTROL ROOM NDMA (FAX.NO. 26701729)
CABINET SECRETARIAT (FAX.NO.23012284, 23018638)
PS TO HON'BLE MINISTER FOR S & T AND EARTH SCIENCES (FAX NO.23316745)
SECRETARY, MOES (FAX NO. 24629777)
H.Q. (INTEGRATED DEFENCE STAFF AND CDS) (FAX NO. 23005137/23005147)
DIRECTOR GENERAL, DOORDARSHAN (23385843)
DIRECTOR GENERAL, AIR (23421105, 23421219)
PIB MOES (FAX NO. 23389042)
UNI (FAX NO. 23355841)
D.G. NATIONAL DISASTER RESPONSE FORCE (NDRF) (FAX NO. 26105912, 2436 3260)
DIRECTOR, PUNCTUALITY, INDIAN RAILWAYS (FAX NO. 23388503)
CHIEF SECRETARY, ANDAMAN & NICOBAR ISLANDS (FAX NO. 03192- 232656)
CHIEF SECRETARY, GOVT. WEST BENGAL (FAX NO. 033-22144328)
CHIEF SECRETARY, GOVT. OF ODISHA (FAX NO. 0674 -2536660)
CHIEF SECRETARY, GOVT. OF ANDHRA PRADESH (FAX NO. 0863-2441029, 08645-246600)
CHIEF SECRETARY, GOVT. OF TAMIL NADU (FAX NO. 044-25672304)
CHIEF SECRETARY, GOVT. OF PUDUCHERRY (FAX NO. 0413-2337575, 2334145)
CHIEF SECRETARY, GOVT. OF TRIPURA (FAX NO. 0381-2414013, 2413200)
CHIEF SECRETARY, GOVT. OF MIZORAM (FAX NO. 0389-2322745, 2320588)
CHIEF SECRETARY, GOVT. OF ASSAM (FAX NO. 0361-2260900)
CHIEF SECRETARY, GOVT. OF MANIPUR (FAX NO. 0385-2452629)
CHIEF SECRETARY, GOVT. OF NAGALAND (FAX NO. 0370-2270057)

Sub: Deep Depression over southeast Bay of Bengal

The deep depression over southeast Bay of Bengal moved northwestwards with a speed of 07 kmph during past 06 hours and lay centered at 0830 hours IST of today, the 10th May 2023 over the same region near latitude 8.8°N and longitude 88.9°E, about 530 km southwest of Port Blair, 1430 km south of Cox's Bazar (Bangladesh) and 1320 km south-southwest of Sittwe (Myanmar).

It is very likely to move north-northwestwards and intensify gradually into a cyclonic storm over the same region around today evening. Then continuing to move north-northwestwards, it will gradually intensify further into a severe cyclonic storm by 11th May morning and very severe cyclonic storm by 11th May mid-night over southeast and adjoining central Bay of Bengal. Thereafter, it is likely to recurve gradually, move north-northeastwards from 12th May morning. It is likely to weaken slightly from 13th May evening and cross southeast Bangladesh and north Myanmar coasts between Cox's Bazar (Bangladesh) and Kyaukpyu (Myanmar) around forenoon of 14th May, 2023 with maximum sustained wind speed of 110-120 kmph gusting to 130 kmph.

Forecast track and intensity are given below:

Date/Time (IST)	Position (Lat. °N/ long. °E)	Maximum sustained surface wind speed (Kmph)	Category of cyclonic disturbance
10.05.23/0830	8.8/88.9	50-60 gusting to 70	Deep Depression
10.05.23/1130	9.1/88.6	55-65 gusting to 75	Deep Depression
10.05.23/1730	9.7/88.1	60-70 gusting to 80	Cyclonic Storm
10.05.23/2330	10.3/87.7	75-85 gusting to 95	Cyclonic Storm
11.05.23/0530	11.0/87.6	90-100 gusting to 110	Severe Cyclonic Storm
11.05.23/1730	11.9/87.5	105-115 gusting to 125	Severe Cyclonic Storm
12.05.23/0530	13.1/87.6	125-135 gusting to 150	Very Severe Cyclonic Storm
12.05.23/1730	14.3/88.2	130-140 gusting to 155	Very Severe Cyclonic Storm
13.05.23/0530	15.8/89.3	140-150 gusting to 165	Very Severe Cyclonic Storm
13.05.23/1730	17.9/90.8	130-140 gusting to 155	Very Severe Cyclonic Storm
14.05.23/0530	20.0/92.2	120-130 gusting to 140	Very Severe Cyclonic Storm
14.05.23/1730	22.1/93.5	55-65 gusting to 75	Deep Depression

Warnings:

(i) Rainfall (warning graphics enclosed)

- ❖ **Andaman & Nicobar Islands:** Rainfall at most places with Heavy to very heavy rainfall at isolated places is likely till 11th May. Heavy rainfall at isolated places over Andaman Islands is likely on 12th May.
- ❖ **Tripura & Mizoram:** Rainfall at most places with Heavy rainfall at isolated places is likely on 13th May and heavy to very heavy rainfall at isolated places on 14th May.
- ❖ **Nagaland, Manipur & south Assam:** Rainfall at many places with Heavy rainfall at isolated places is on 14th May.

(ii) Wind warning:

- ❖ **Andaman & Nicobar Islands:** Squally wind speed reaching 50-60 kmph gusting to 70 kmph is likely to prevail till 11th May.
- ❖ **Andaman Sea:** Squally wind speed reaching 50-60 kmph gusting to 70 kmph is likely to prevail over south Andaman Sea till 11th and 12th May over North Andaman Sea.
- ❖ **Southeast Bay of Bengal:** Squally wind speed reaching 50-60 kmph gusting to 70 kmph are prevailing and likely to become 60-70 kmph gusting to 80 kmph from today evening; Gale wind speed reaching 90-100 kmph gusting to 110 kmph from 11th morning and 120-130 kmph gusting to 140 kmph by 12th morning to afternoon and decrease thereafter becoming squally wind speed reaching 50-60 kmph gusting to 70 kmph on 13th May.
- ❖ **Adjoining southwest Bay of Bengal:** Squally wind speed reaching 45-55 kmph gusting to 65 kmph is likely during 10th and 11th May.
- ❖ **Eastcentral Bay of Bengal:** Squally weather with wind speed reaching 40-50 kmph gusting to 60 kmph are prevailing and likely to become 60-70 kmph gusting to 80 kmph by 11th morning; Gale wind speed reaching 80-100 kmph gusting to 120 kmph on 11th evening, 130-140 kmph gusting to 150 kmph from 12th May evening and 140-150 kmph gusting to 165 kmph on 13th May forenoon, and then gradually decrease becoming 100-110 gusting to 120 by 14th May morning.

- ❖ **Westcentral Bay of Bengal:**
Squally weather with wind speed reaching 40-50 kmph gusting to 60 kmph are likely to prevail from 11th morning.
It would gradually increase becoming gale wind speed reaching 60-70 kmph gusting to 80 kmph from 11th May evening;
Gale wind speed reaching 110-120 kmph gusting to 130 kmph on 12th morning and becoming 90-100 kmph gusting to 110 kmph from 13th May morning and gradually decreases thereafter.
- ❖ **Northeast Bay of Bengal:**
Squally wind speed reaching 50-60 kmph gusting to 70 kmph is likely on 12th May.
Gale wind speed reaching 70-80 gusting to 90 likely to commence from 13th morning and gradually increase and becoming 130-140 kmph gusting 150 kmph during 13th evening and night. Subsequently, it is likely to decrease to 120-130 kmph gusting to 140 kmph on 14th May forenoon and significantly decrease thereafter.
- ❖ **Northwest Bay of Bengal:**
Squally wind speed reaching 40-50 kmph gusting to 60 kmph is likely from 13th May to 14th May forenoon and decrease thereafter.
- ❖ **Tripura, Mizoram & south Manipur:**
Squally wind speed reaching 45-55 kmph gusting to 65 kmph is very likely to prevail on 14th May.

(iii) Sea condition

- ❖ **Andaman Sea:**
Rough to very rough over south Andaman Sea very likely to prevail till today evening.
Very rough to high over Andaman Sea from 10th evening to 11th May.
Very rough to rough over north Andaman Sea during 12th May.
- ❖ **Southeast Bay of Bengal:**
Rough to very rough very likely to prevail till today evening..
Very rough to high from 10th evening to 11th May.
High to very high on 12th May.
- ❖ **Eastcentral Bay of Bengal:**
Rough to very rough very likely to prevail till today evening.
High to very high from 10th evening to 11th May.
Very High to phenomenal during 12th & 13th May.
- ❖ **Westcentral Bay of Bengal:**
Rough to very rough very likely to prevail till today evening.
Very rough to high from 10th May evening to 11th May.
High to Very High on 12th May.
- ❖ **Northeast Bay of Bengal:**
Rough to very rough on 12th May.
Phenomenal to very high during 13th & 14th May.

(iv) Fishermen Warning (warning graphics enclosed)

- ❖ Fishermen, ships, boats and trawlers are advised not to venture into southeast Bay of Bengal and south Andaman Sea till 11th May, central Bay of Bengal and north Andaman Sea till 14th May morning, and into northeast Bay of Bengal during 12th-14th May.
- ❖ Those over central Bay of Bengal and north Andaman Sea are advised to return by today, the 10th May.

(v) Advisory

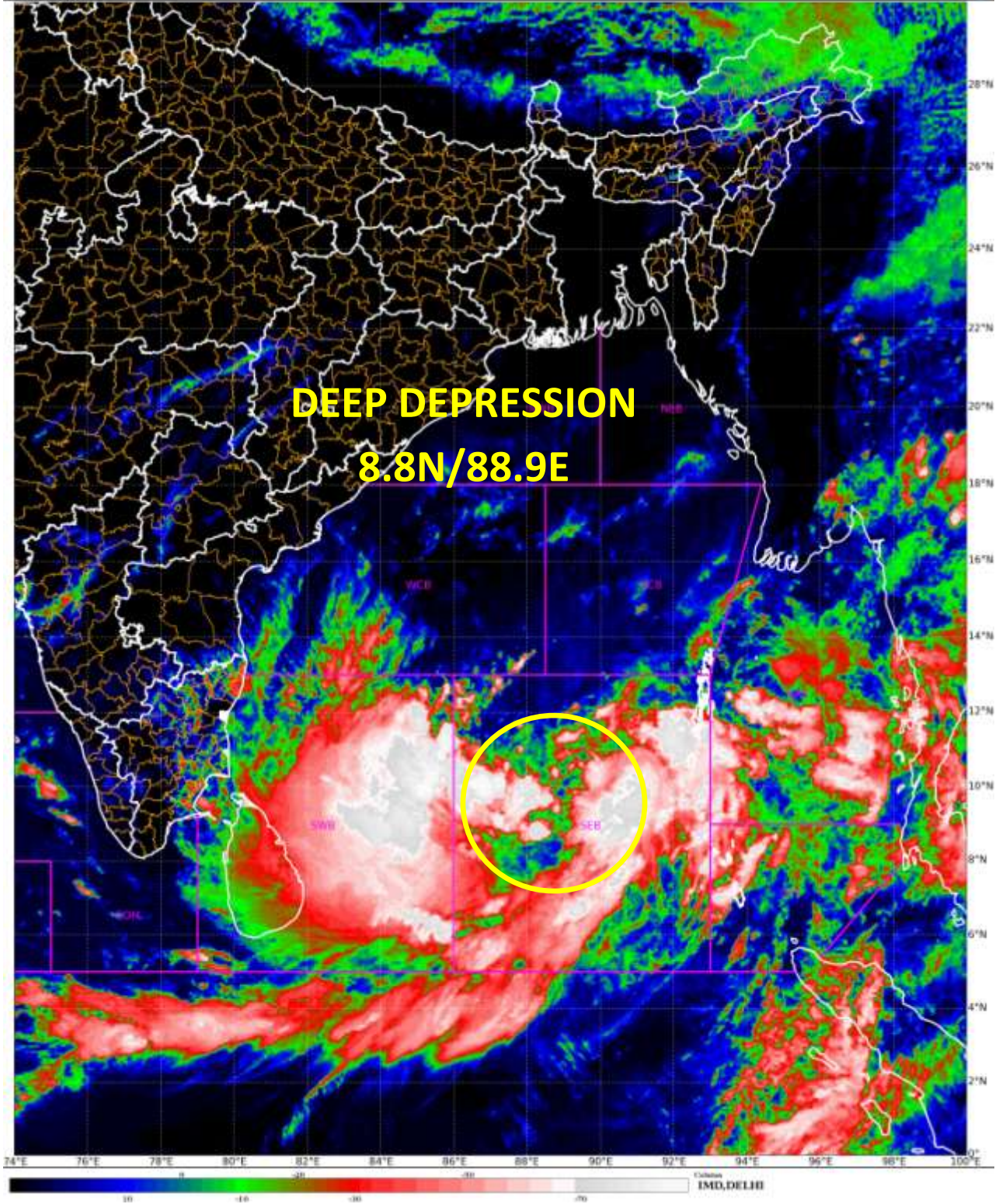
- ❖ Regulation of tourism and offshore activities and shipping near Andaman & Nicobar Islands till 13th May.
- ❖ Regulation of shipping activity over the sea areas of southeast Bay of Bengal and Andaman Sea till 12th May, eastcentral Bay of Bengal till 14th , and westcentral Bay of Bengal till 13th May.
- ❖ Regulation of shipping activity over the sea areas of northeast Bay of Bengal during 12th-14th May.

The system is under continuous surveillance and the next message will be issued at 1430 hours IST of today, the 10th May 2023.

(M. T. Bushair)

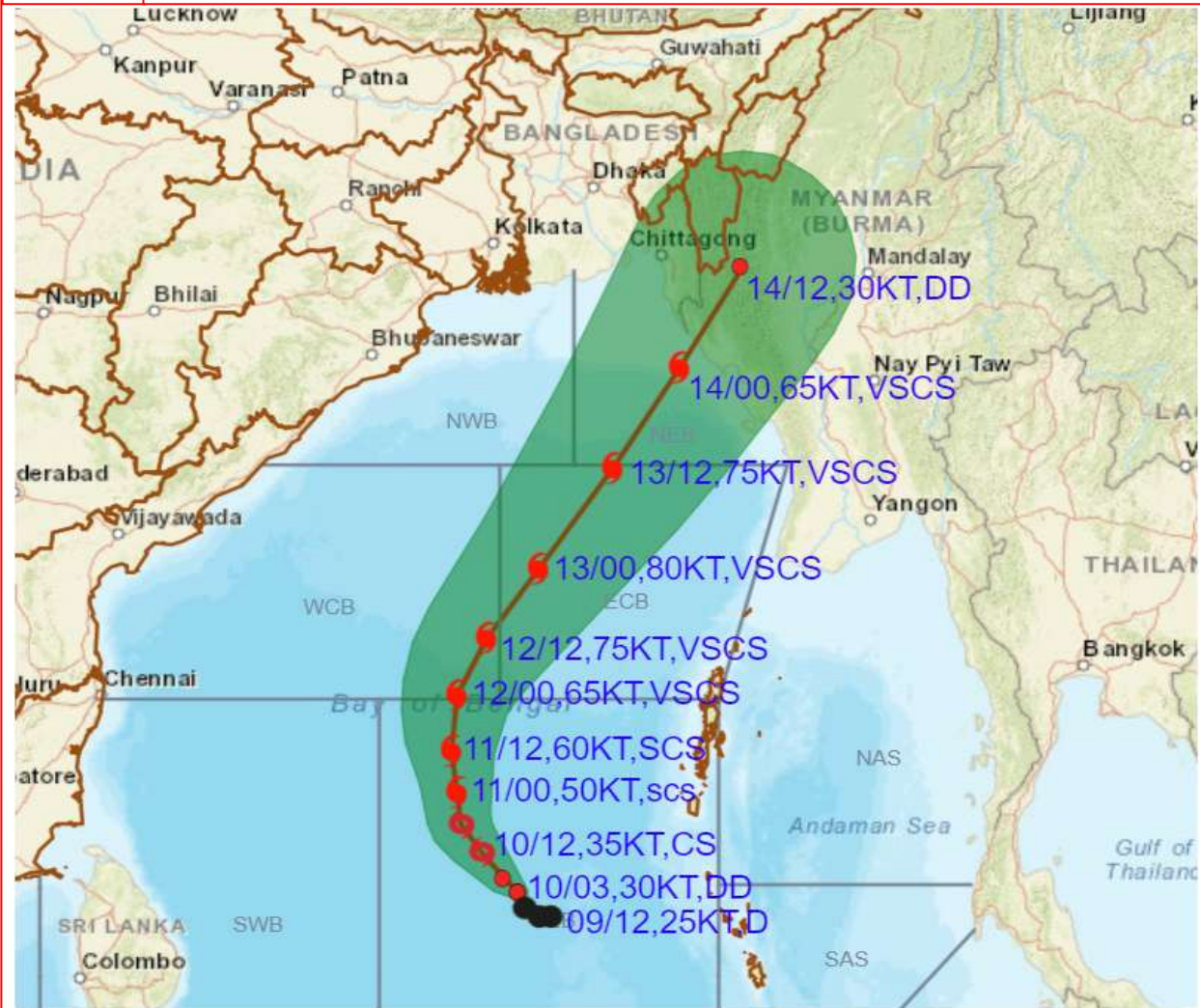
Scientist C, Cyclone Warning Division, New Delhi

Copy to: ACWC Kolkata/ ACWC Chennai/ CWC Bhubaneswar/CWCVisakhapatnam/MO Port Blair





OBSERVED AND FORECAST TRACK ALONGWITH CONE OF UNCERTAINTY OF DEEP DEPRESSION OVER SOUTHEAST BAY OF BENGAL BASED ON 0300 UTC (0830 IST) OF 10TH MAY 2023.

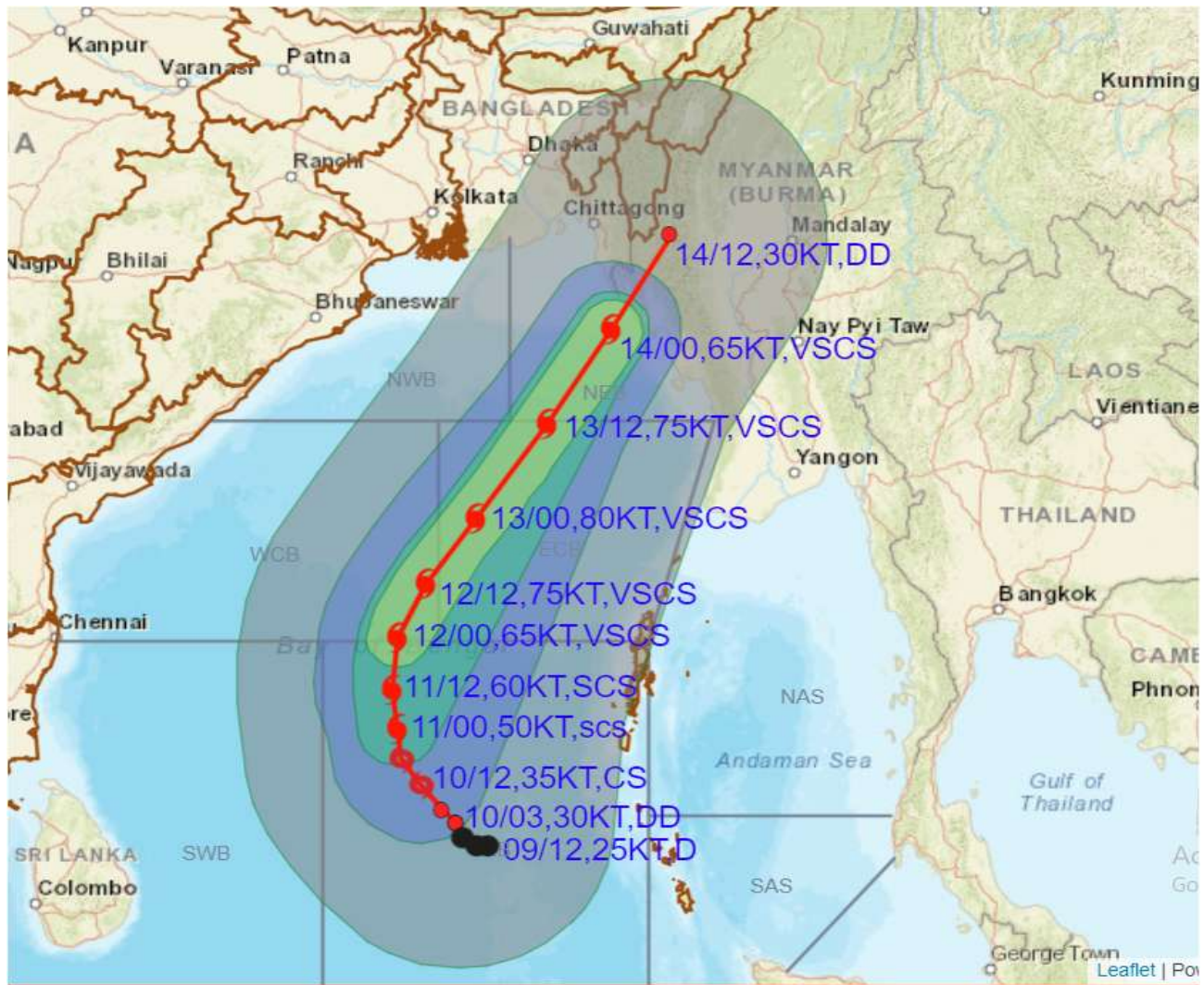


DATE/TIME IN UTC
 IST=UTC + 0530
 L: LOW PRESSURE AREA
 WML: WELL MARKED LOW PRESSURE AREA
 D: DEPRESSION (17-27 KT)
 DD: DEEP DEPRESSION (28-33 KT)
 CS: CYCLONIC STORM (34-47 KT)
 SCS: SEVERE CYCLONIC STORM (48-63KT)
 VSCS: VERY SEVERE CYCLONIC STORM (64-89 KT)
 ESCS: EXTREMELY SEVERE CYCLONIC STORM (90-119 KT)
 SuCS: SUPER CYCLONIC STORM (\geq 120 KT)

- LESS THAN 34 KT
- 34-47 KT
- \geq 48 KT
- OBSERVED TRACK
- FORECAST TRACK
- CONE OF UNCERTAINTY



OBSERVED AND FORECAST TRACK ALONGWITH QUADRANT WIND DISTRIBUTION OF DEEP DEPRESSION OVER SOUTHEAST BAY OF BENGAL BASED ON 0300 UTC (0830 IST) OF 10TH MAY 2023.



DATE/TIME IN UTC

IST=UTC + 0530

L: LOW PRESSURE AREA

WML: WELL MARKED LOW PRESSURE AREA

D: DEPRESSION (17-27 KT)

DD: DEEP DEPRESSION (28-33 KT)

CS: CYCLONIC STORM (34-47 KT)

SCS: SEVERE CYCLONIC STORM (48-63KT)

VSCS: VERY SEVERE CYCLONIC STORM (64-89 KT)

ESCS: EXTREMELY SEVERE CYCLONIC STORM (90-119 KT)

SuCS: SUPER CYCLONIC STORM (≥ 120 KT)

● LESS THAN 34 KT

○ 34-47 KT

● ≥ 48 KT

— OBSERVED TRACK

— FORECAST TRACK

— CONE OF UNCERTAINTY

AREA OF MAXIMUM SUSTAINED WIND SPEED:

— 28-33 KT (52-61 KMPH)

— 34-49 KT (62-91 KMPH)

— 50-63 KT (92-117 KMPH)

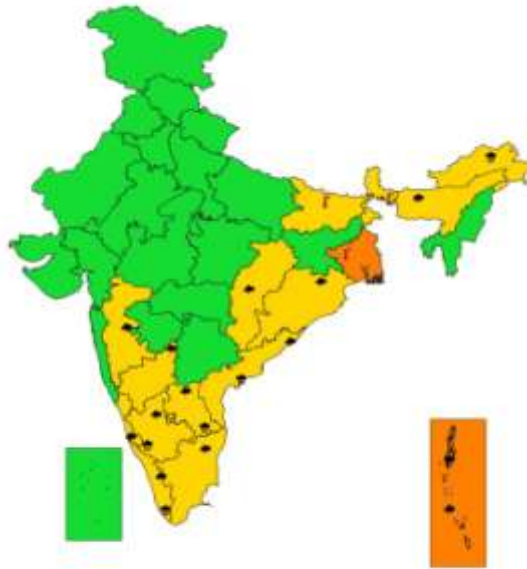
— ≥ 64 KT (≥ 118 KMPH)

IMPACT OVER THE SEA

MSW (knot/kmph)	Impact	Action
28-33 (52-61)	Very rough seas	Total suspension of fishing operations
34-49 (62-91)	High to very high seas	Total suspension of fishing operations
50-63 (92-117)	Very high seas	Total suspension of fishing operations
≥ 64 (≥ 118)	Phenomenal	Total suspension of fishing operations



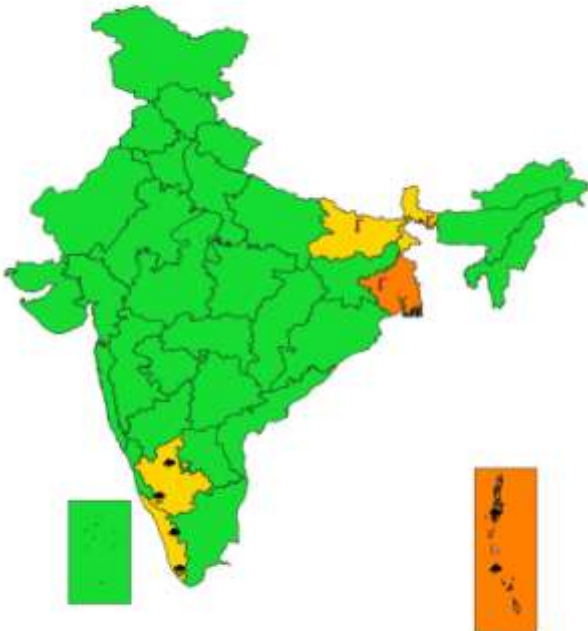
SUBDIVISIONWISE WEATHER WARNING FOR DAY 1
(10-5-2023)



- | | | |
|-----------------------------|------------------------|--------------------------|
| Subdivision Warning | Dust Storm | Subdivision color |
| ● Heavy Rain | ⚡ Strong Surface Winds | 🟢 NO WARNING |
| ❄️ Heavy Snow | 🔥 Heat Wave | 🟡 WATCH (BE UPDATED) |
| ⚡ Thunderstorms & Lightning | ❄️ Cold wave | 🟠 ALERT (BE PREPARED) |
| 🌧️ Hailstorm | 🌫️ Fog | 🔴 WARNING (TAKE ACTION) |



SUBDIVISIONWISE WEATHER WARNING FOR DAY 2
(11-5-2023)



- | | | |
|-----------------------------|------------------------|--------------------------|
| Subdivision Warning | Dust Storm | Subdivision color |
| ● Heavy Rain | ⚡ Strong Surface Winds | 🟢 NO WARNING |
| ❄️ Heavy Snow | 🔥 Heat Wave | 🟡 WATCH (BE UPDATED) |
| ⚡ Thunderstorms & Lightning | ❄️ Cold wave | 🟠 ALERT (BE PREPARED) |
| 🌧️ Hailstorm | 🌫️ Fog | 🔴 WARNING (TAKE ACTION) |



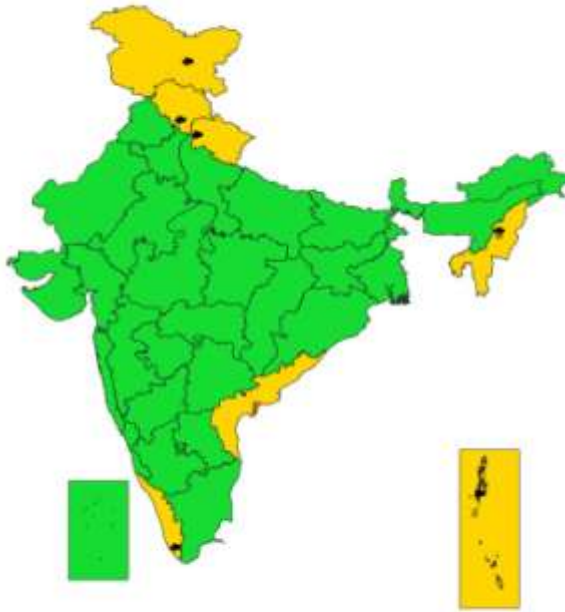
SUBDIVISIONWISE WEATHER WARNING FOR DAY 3
(12-5-2023)



- | | | |
|-----------------------------|------------------------|--------------------------|
| Subdivision Warning | Dust Storm | Subdivision color |
| ● Heavy Rain | ⚡ Strong Surface Winds | 🟢 NO WARNING |
| ❄️ Heavy Snow | 🔥 Heat Wave | 🟡 WATCH (BE UPDATED) |
| ⚡ Thunderstorms & Lightning | ❄️ Cold wave | 🟠 ALERT (BE PREPARED) |
| 🌧️ Hailstorm | 🌫️ Fog | 🔴 WARNING (TAKE ACTION) |



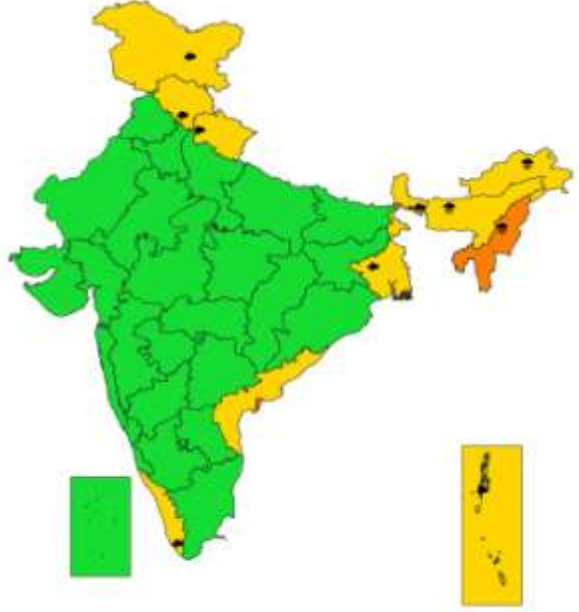
**SUBDIVISIONWISE WEATHER WARNING FOR DAY 4
(13-5-2023)**



- | | | |
|-----------------------------|------------------------|--------------------------|
| Subdivision Warning | Dust Storm | Subdivision color |
| ☁ Heavy Rain | 🌪 Strong Surface Winds | 🟢 NO WARNING |
| ❄ Heavy Snow | 🔥 Heat Wave | 🟡 WATCH/BE UPDATED) |
| ⚡ Thunderstorms & Lightning | ❄ Cold wave | 🟠 ALERT (BE PREPARED) |
| ☁️ Hailstorm | 🌫 Fog | 🔴 WARNING (TAKE ACTION) |

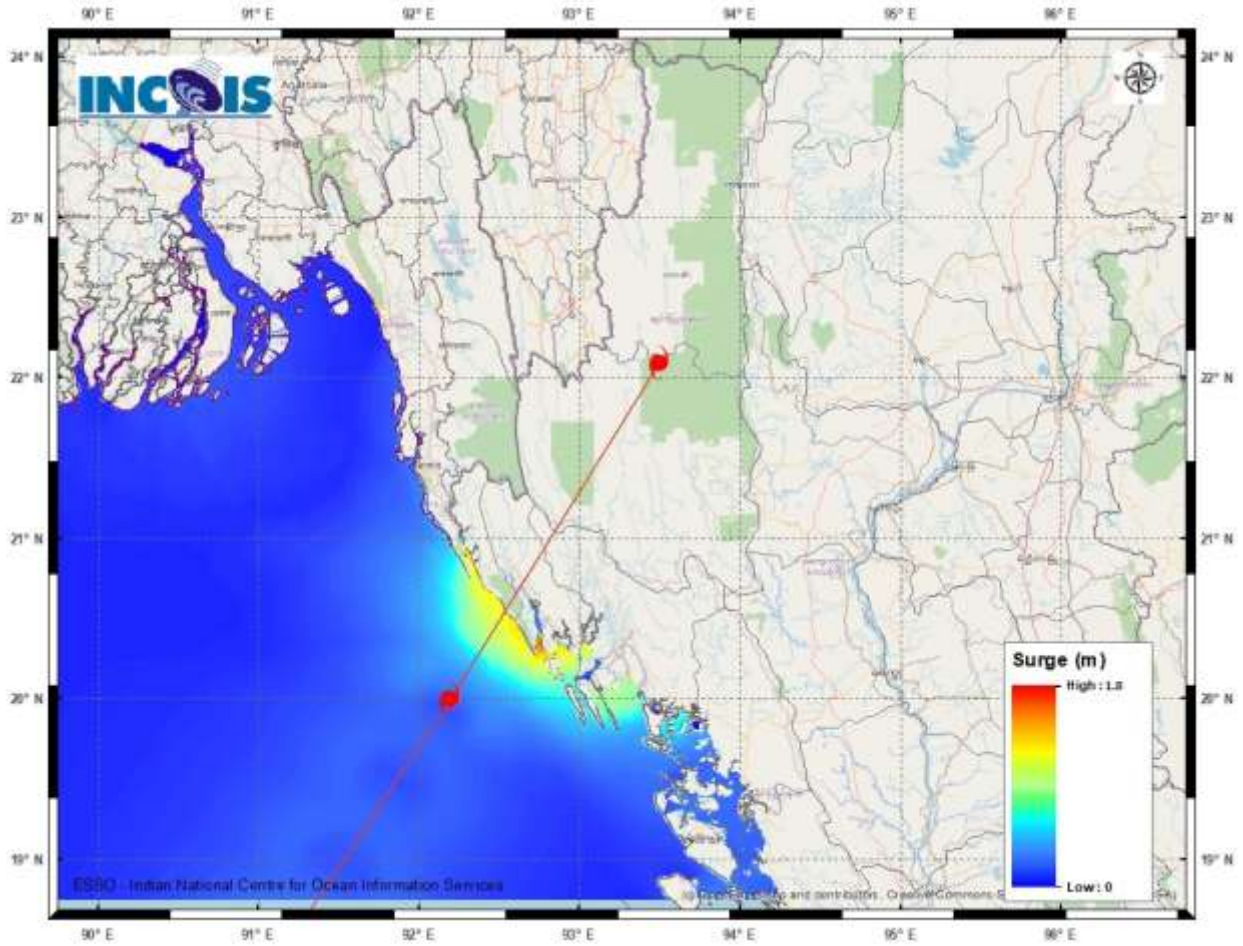


**SUBDIVISIONWISE WEATHER WARNING FOR DAY 5
(14-5-2023)**

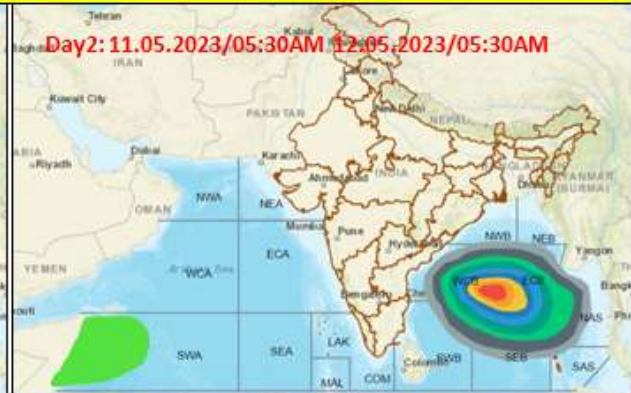
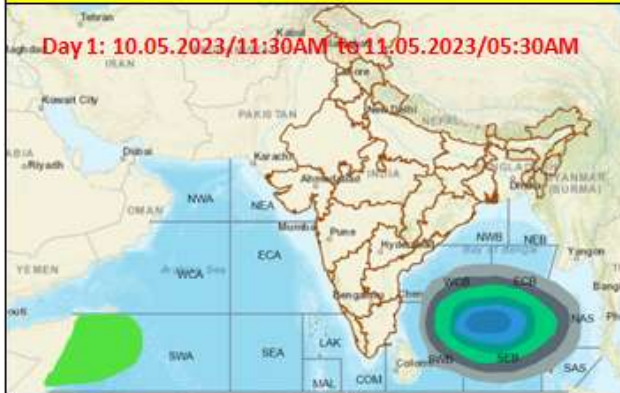


- | | | |
|-----------------------------|------------------------|--------------------------|
| Subdivision Warning | Dust Storm | Subdivision color |
| ☁ Heavy Rain | 🌪 Strong Surface Winds | 🟢 NO WARNING |
| ❄ Heavy Snow | 🔥 Heat Wave | 🟡 WATCH/BE UPDATED) |
| ⚡ Thunderstorms & Lightning | ❄ Cold wave | 🟠 ALERT (BE PREPARED) |
| ☁️ Hailstorm | 🌫 Fog | 🔴 WARNING (TAKE ACTION) |

Storm Surge Warning Graphics based on 0000 UTC (0530 IST) Track



Fishermen warning graphics



	Squally WX with wind speed 40-50 kmph gusting to 60 kmph
	Squally WX with wind speed 50-60 kmph gusting to 70 kmph
	Gale wind speed 60-70 kmph gusting to 80 kmph
	Gale wind with wind speed 70-80 kmph gusting to 90 kmph
	Gale wind with wind speed 80-90 kmph gusting to 100 kmph
	Gale wind with wind speed 90-100 kmph gusting to 110 kmph
	Gale wind with wind speed 100-110 kmph gusting to 120 kmph
	Gale wind with wind speed 110-120 kmph gusting to 140 kmph
	Gale wind with wind speed 130-140 kmph gusting to 150 kmph
	Gale wind with wind speed 140-150 kmph gusting to 160 kmph

FISHERMEN ARE ADVISED NOT TO VENTURE INTO THE MARKED AREAS